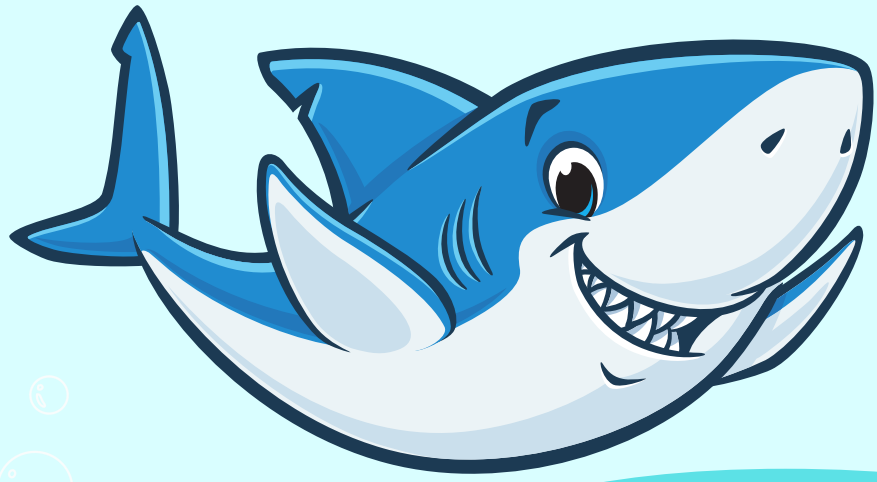
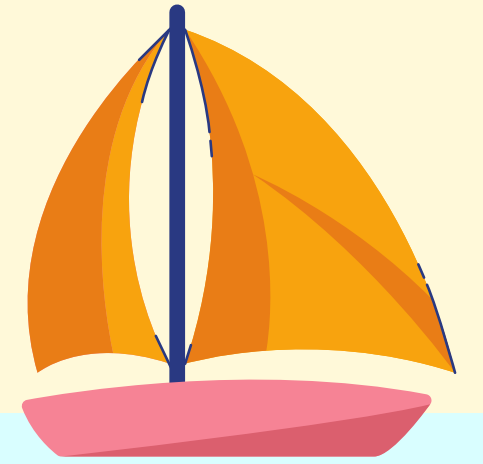


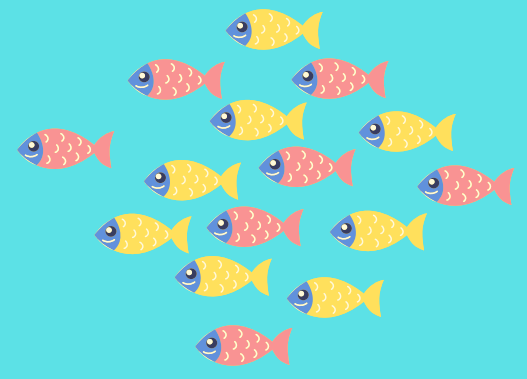
NASSAU VIRTUAL 2024-2025 FULL-TIME INITIAL ENROLLMENT APPLICATION



2024-2025 NASSAU VIRTUAL APPLICATION LINK
[HTTPS://FORMS.OFFICE.COM/R/42NTU91XFW](https://forms.office.com/r/42ntu91xfw)

APPLICATION PROCESS

- WE WILL BEGIN PROCESSING APPLICATIONS AFTER MAY 21ST.
- WE WILL CONTACT YOU VIA EMAIL.

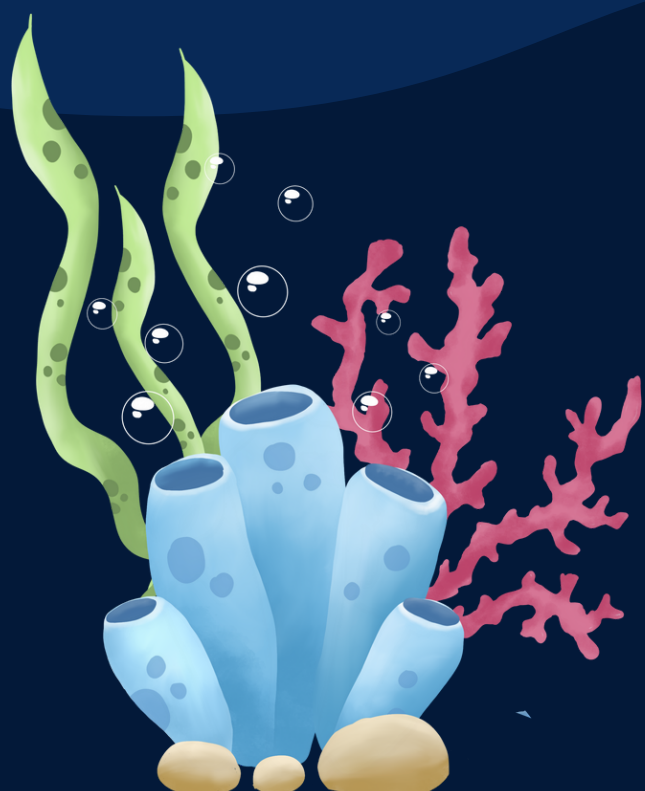


2023 NASSAU VIRTUAL HANDBOOK LINK

PLEASE USE THE FOLLOWING LINK TO LEARN MORE ABOUT
NASSAU VIRTUAL, FULL-TIME ENROLLMENT,
[HTTPS://WWW.NASSAU.K12.FL.US/PAGE/5199.](https://www.nassau.k12.fl.us/page/5199)

COURSES OFFERED

PLEASE VISIT THE FOLLOWING LINK TO VIEW A LIST OF COURSES
OFFERED BY NASSAU VIRTUAL THROUGH MY DISTRICT VIRTUAL
SCHOOL, [HTTPS://SITES.GOOGLE.COM/NEFEC.ORG/MDVS/MDVS-
POWERED-BY-FLVS.](https://sites.google.com/nefec.org/mdvs/mdvs-powered-by-flvs)



WWW.NASSAUVIRTUAL.COM

NVSINFO@NASSAU.K12.FL.US

