

# YHS RISING FRESHMAN PARENT INFORMATION



MS. BENENHALEY: CLASS OF 2024

MS. HICKEN: CLASS OF 2025

MRS. HELBERT: CLASS OF 2026

MS. LAVACCA: CLASS OF 2027

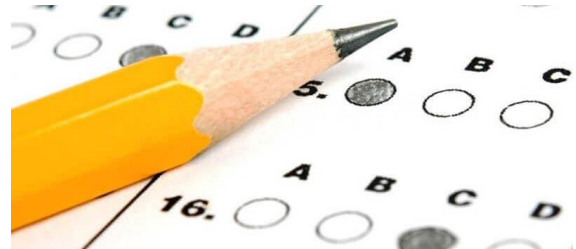
# GRADUATION REQUIREMENTS

- 4 English Credits
- 4 Math Credits (Algebra 1 and Geometry)
- 3 Science Credits (Biology)
- 3 Social Studies Credits ( World History, US History and US Govt  $\frac{1}{2}$  & Economics  $\frac{1}{2}$  )
- 1 Fine, Performing, Practical Art, Speech/ Debate Credit, or CTE
- 1 HOPE Credit
- 7.5 Elective Credits
- .5 Personal Financial Literacy
- 2.0 Unweighted Grade Point Average (GPA)
- Successfully Pass All Required Testing
  - Algebra 1 End of Course Exam
  - 10th Grade Reading FSA



# FLORIDA STANDARDS ASSESSMENT (FSA)

- Students take year-long English courses 9th & 10th grade at YHS to prepare for the graduation requirement Reading FSA test (new state testing)
- Students must attempt the exam at least 1 time
- If students do not pass, they will retake it until they pass



# COURSE SELECTION PROCESS AND DEADLINES

- Students are placed in core courses based on academic achievement in their current core placements and test scores
- Students request electives during Spring of the current school year on the course request form
- Students can request course changes for core classes during the first week of each semester through our course request form

**Student Course Request Form-YULEE HIGH**  
**NOTE: Final selections will be revised by YHS based on**  
**2024 FAST & EOC Scores.**

**FRESHMAN**  
**2024-2025**

Today's Date: \_\_\_\_\_ Return by: **February 16** \_\_\_\_\_

(Note: Form due to English teacher. If this form is not returned, students will be placed in courses that are available.)

**9**

Teacher will check ☒ all core recommended courses. There is **NO** guarantee that all courses listed will be offered 2024-2025. *Requests may or may not be honored pending master schedule changes, class size requirements, scheduling conflicts, etc.* Note: An \* following the course descriptor indicates a Level 3 course, advanced placement, or dual enrollment. Student/Parent may supply additional comments if choice differs from teacher. *Courses are full year/1 credit unless otherwise indicated.*

**LANGUAGE ARTS**

\_\_\_ Intensive Reading (level 1 or 2)  
 and English I (2 credits)

\_\_\_ English I (level 3)

\_\_\_ English I Honors\* (level 4 or 5)

Teacher Approval: \_\_\_\_\_

**MATHEMATICS**

\_\_\_ Algebra 1 (level 1 or 2)

\_\_\_ Algebra 1<sup>II</sup> (level 3, 4, or 5)

\_\_\_ Geometry<sup>II</sup> (Alg 1 completed in 8th grade)

Teacher Approval: \_\_\_\_\_

**SCIENCE**

*(based off of math courses)*

\_\_\_ Environmental Science (level 1 or 2)

\_\_\_ Biology (level 3)

\_\_\_ Biology I<sup>II</sup> (level 4 or 5)

Teacher Approval: \_\_\_\_\_

**SOCIAL STUDIES**

\_\_\_ Hornet 101 (Leadership Skills)

\_\_\_ AP Human Geo

Teacher Approval: \_\_\_\_\_

Comments/Additional needs: \_\_\_\_\_

\_\_\_\_\_

Student Signature: \_\_\_\_\_ Date: \_\_\_\_\_

Parent Signature: \_\_\_\_\_ Date: \_\_\_\_\_

\*Hornet 101 (Leadership Skills) is a required Freshman elective unless the student is in AVID program.

\*\*See reverse side for Elective choices.

# ADVANCED PLACEMENT COURSES

- Advanced placement (AP) courses offer students the opportunity to take more rigorous courses and potentially earn college credits.
- Students must pass the AP exam at the end of the course to earn college credits
- Some AP courses we offer include AP US History, AP English/Composition, AP Psychology, and AP Computer Science



# DUAL ENROLLMENT AND EARLY ADMISSIONS

- Dual enrollment courses are offered in partnership with FSCJ
- Courses offered at YHS and FSCJ
- Must have a **3.0 unweighted GPA** and **qualifying test scores** on the SAT, ACT, or Accuplacer
- Must take SLS 1103:Strategies for Success in College before taking additional DE courses
- Early Admissions = full course schedule at FSCJ (*only available to seniors with 3.5 weighted GPA and qualifying test scores*)





# FRESHMAN TIMELINE



- Familiarize yourself with graduation requirements
- Explore extracurricular activities and community service opportunities
- Maintain excellent grades
- Engage in academic and career planning
- Prepare for high school testing (FSA, EOC)
- Knowing and utilizing your counseling services





# BRIGHT FUTURES SCHOLARSHIP

## Florida Bright Futures Scholarship Program Florida Academic Scholars (FAS) / Florida Medallion Scholars (FMS) 2023-24

### Initial Eligibility Requirements: (As determined by the Florida Department of Education)

1. Submit the [Florida Financial Aid Application \(FFAA\)](#) no later than August 31 after high school graduation.
2. Graduate from a Florida high school with a standard high school diploma or its equivalent.
3. Complete the 16 college-preparatory courses required for admission to a state university.
4. Achieve the required weighted GPA in the 16 college-preparatory courses per the chart below.
5. Achieve the required composite ACT<sup>1</sup> score, Overall Score on the Classic Learning Test (CLT), or combined SAT<sup>2</sup> score no later than August 31 of the student's graduation year (or through January 31 for mid-year graduates), per the chart below.
6. Complete the required number of volunteer service hours, paid work hours, or 100 total combined hours per the chart below.

Type	16 High School College-Preparatory Course Credits <sup>3</sup>	High School Weighted Bright Futures GPA	College Entrance Exams by High School Graduation Year (ACT <sup>1</sup> /CLT <sup>4</sup> /SAT <sup>2</sup> )	Volunteer Service Hours <sup>5</sup>	Paid Work Hours <sup>6</sup>
FAS	4 - English (three must include substantial writing)	3.50	2023-24 Graduates: 29/96/1340	100 hours	100 hours
	4 - Mathematics (at or above the Algebra I level)		2024-25 Graduates: 29/96/1340		
FMS	3 - Natural Science (two must have substantial laboratory)	3.00	2023-24 Graduates: 25/84/1210	75 hours	100 hours
	3 - Social Science 2 - World Language (sequential, in same language)		2024-25 Graduates: 25/84/1210		

<sup>1</sup> The required coursework aligns with the State University System admission requirements found in Florida Board of Governor's Regulation 6.002.

Additional information regarding high school coursework can be found within the [Florida Counseling for Future Education Handbook](#).

<sup>2</sup> Students must earn the required volunteer service hours, 100 paid work hours, or a combination that totals a minimum of 100 hours.

### Requirements to Receive an Award: (As determined by the postsecondary institution)

1. Be evaluated by the Office of Student Financial Assistance (OSFA) as meeting initial eligibility requirements.
2. Be a Florida resident and U.S. citizen or eligible noncitizen.
3. Enroll as a degree- or certificate-seeking student at a Florida institution in at least 6 non-remedial semester credit hours.

### Renewal Requirements: (As determined by grade and hours submitted by the postsecondary institution)

1. Students must earn the number of credit hours based on the student's enrollment type per term.
2. The renewal cumulative GPA requirements are outlined in the table below.

	Florida Academic Scholars (FAS)	Florida Medallion Scholars (FMS)
Minimum Cumulative GPA (unrounded and unweighted)	3.0	2.75

For detailed information, including other ways to qualify, please refer to the [Bright Futures Student Handbook](#).

Eligibility requirements are subject to change with each legislative session.

Students are responsible for tracking their application and award status online and ensuring that funding for an academic year is accurate by contacting their institution's financial aid office.

# COLLEGE AND CAREER READY INITIATIVES AT YHS

- College Visits
- College Conversations
- Career Conversations
- Scholarship Information
- Financial Aid Resourcing
- College & Career Advising
- College Application Assistance
- Partnerships with local businesses and companies

# CAREER AND TECHNICAL EDUCATION PROGRAMS

- Culinary Arts
- Aerospace Technologies (Drones)
- Video Game Programming
- HVAC/Electricity
- VyStar
- Nursing
- EMT
- Law Enforcement
- Computer Systems and IT



# WHY SHOULD YOU VISIT YOUR SCHOOL COUNSELOR?

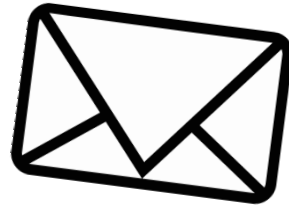
*don't be shy*  
**just say hi!**



**We're here to help you:**

1. Prepare to graduate from high school
2. Select the appropriate coursework that matches your future goals
3. Assist with preparing you for life after high school, including college, military, trade school, and workforce
4. Learn effective study habits and time management skills
5. Receive help with personal and social issues

# CONTACT



**Yulee High School Phone #: (904) 225-8641**

<b>Name</b>	<b>Phone Extension</b>	<b>Email</b>
<b>Ms. Benenhaley</b>	<b>Ext. 5617</b>	<b>benenhaleyka@nassau.k12.fl.us</b>
<b>Ms. Hicken</b>	<b>Ext. 5673</b>	<b>hickenca@nassau.k12.fl.us</b>
<b>Dr. Cantu</b>	<b>Ext. 5607</b>	<b>cantuje@nassau.k12.fl.us</b>

# KEEPING UP WITH THE COUNSELORS

**FOLLOW US**



Text **@yhsc1ass28** to **81010**



**Yulee High School Counseling**



**@yhsschoolcounseling**